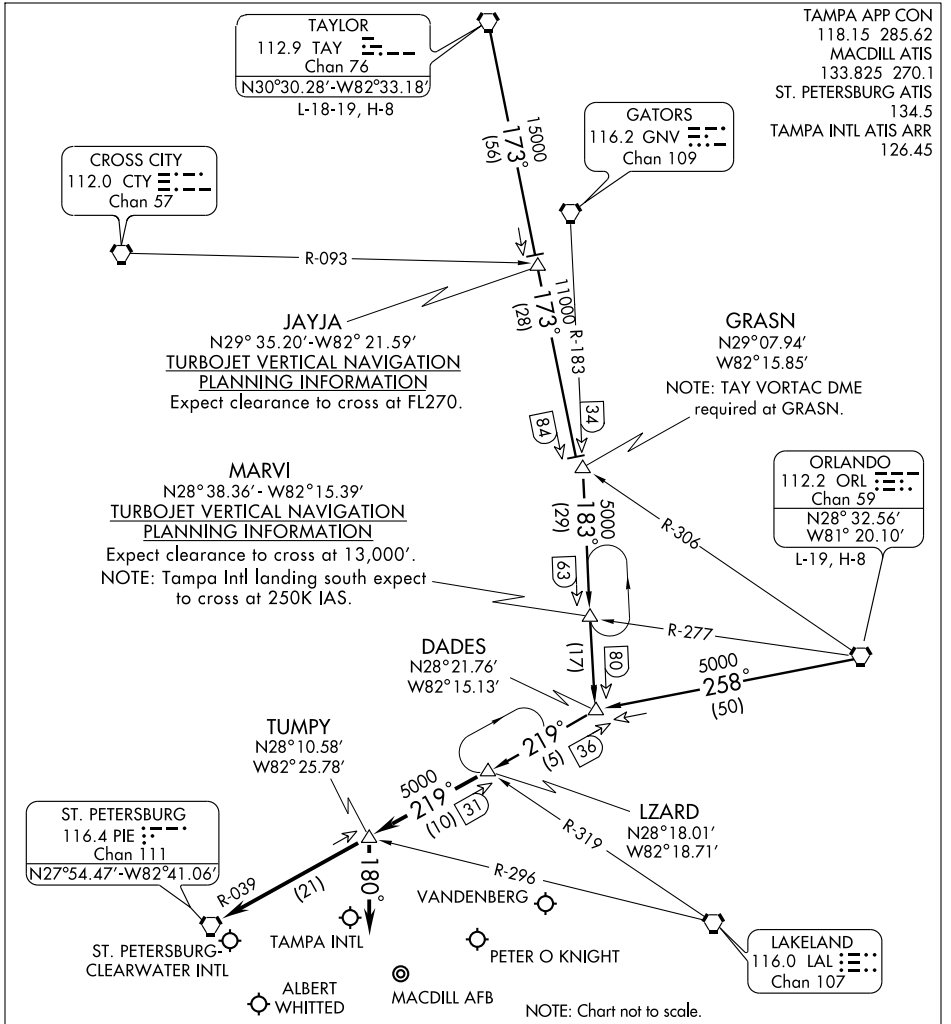


LZARD THREE ARRIVAL (LZARD.LZARD3)

TAMPA, FLORIDA



SE-3, 04 AUG 2005 to 01 SEP 2005

SE-3, 04 AUG 2005 to 01 SEP 2005

TAYLOR TRANSITION (TAY.LZARD3): From over TAY VORTAC via TAY R-173 to GRASN INT, then via GNV R-183 to DADES INT, then via PIE R-039 to LZARD INT. Thence. . .

ORLANDO TRANSITION (ORL.LZARD3): From over ORL VORTAC via ORL R-258 to DADES INT, then via PIE R-039 to LZARD INT. Thence. . .

TAMPA INTL:
 . . . RWY 18: From over LZARD INT via PIE R-039 to PIE VORTAC. Expect radar vectors to final approach after LZARD INT.
 . . . RWY 36: From over LZARD INT via PIE R-039 to TUMPY INT. Depart TUMPY INT heading 180° for vectors to final approach course.

ALL OTHER AIRPORTS: From over LZARD INT via PIE R-039 to PIE VORTAC. Expect radar vectors to the airport after LZARD INT.

LZARD THREE ARRIVAL (LZARD.LZARD3)

TAMPA, FLORIDA